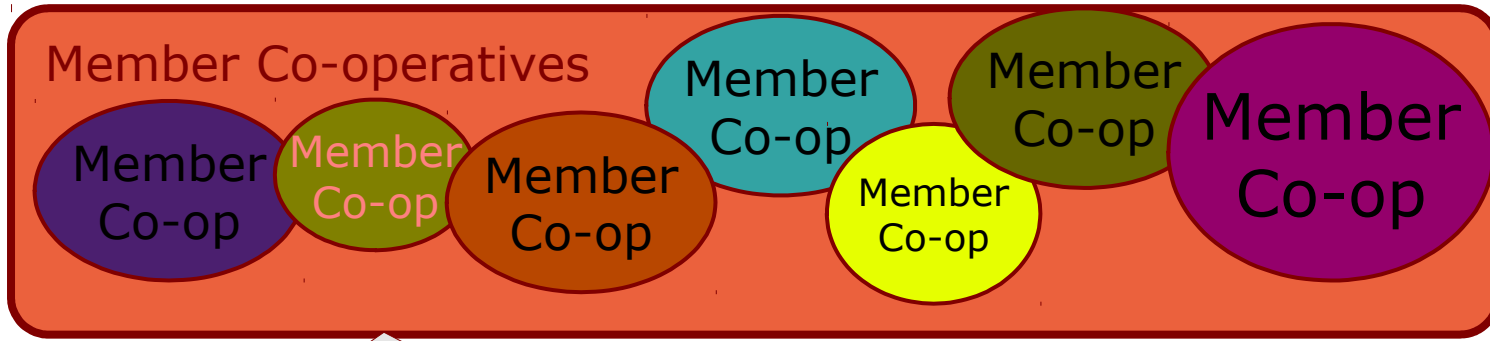
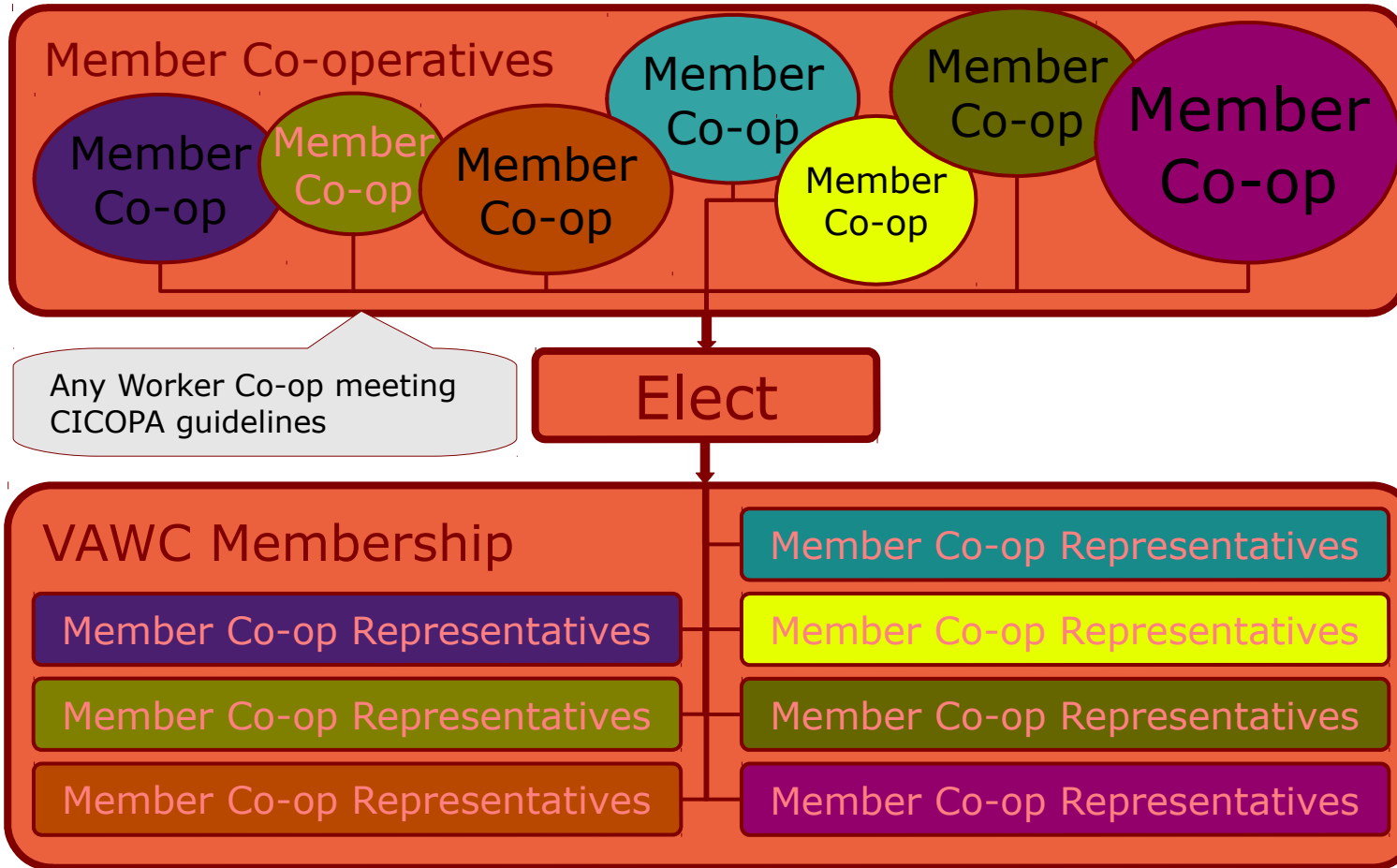


Valley Alliance of Worker Co-operatives

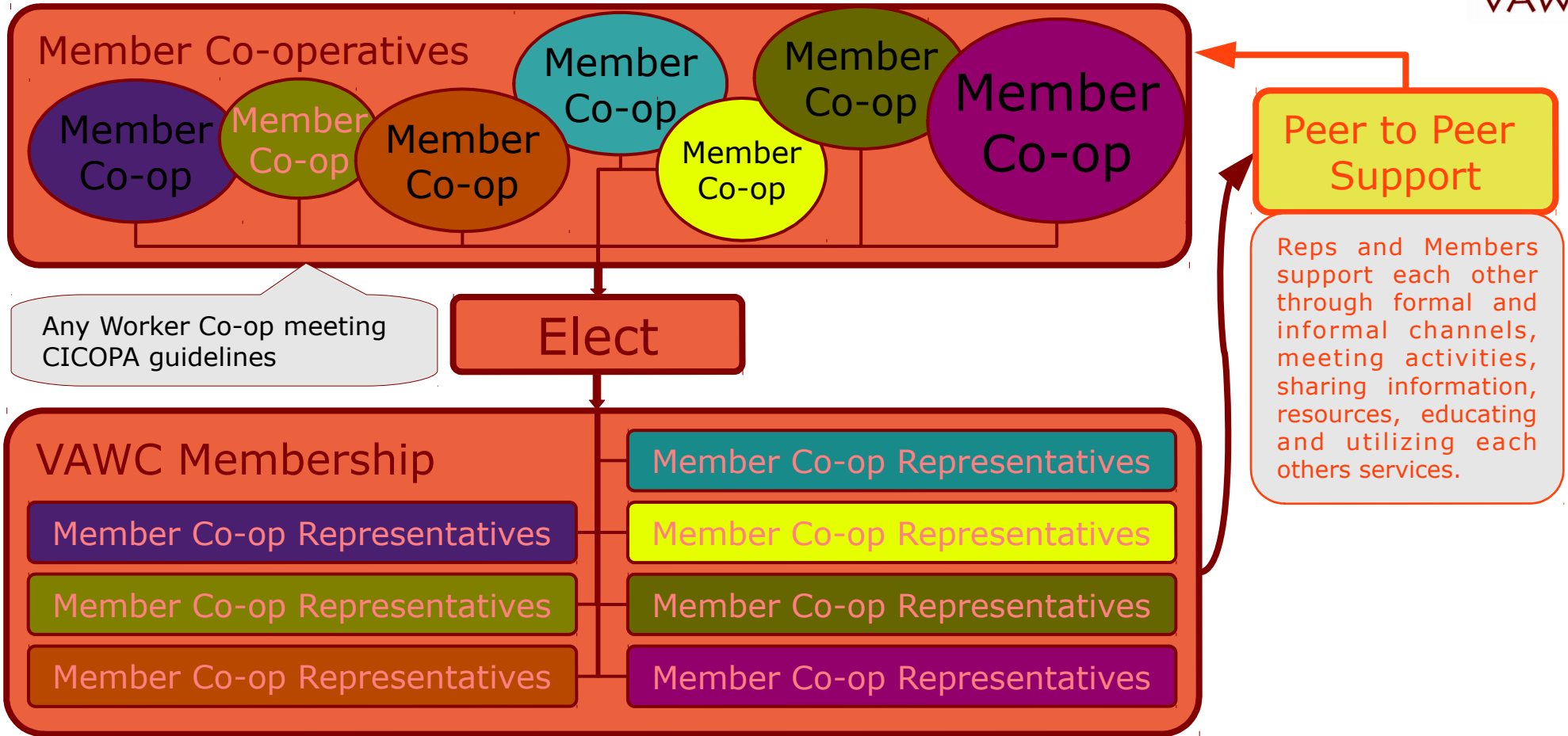


Any Worker Co-op meeting
CICOPA guidelines

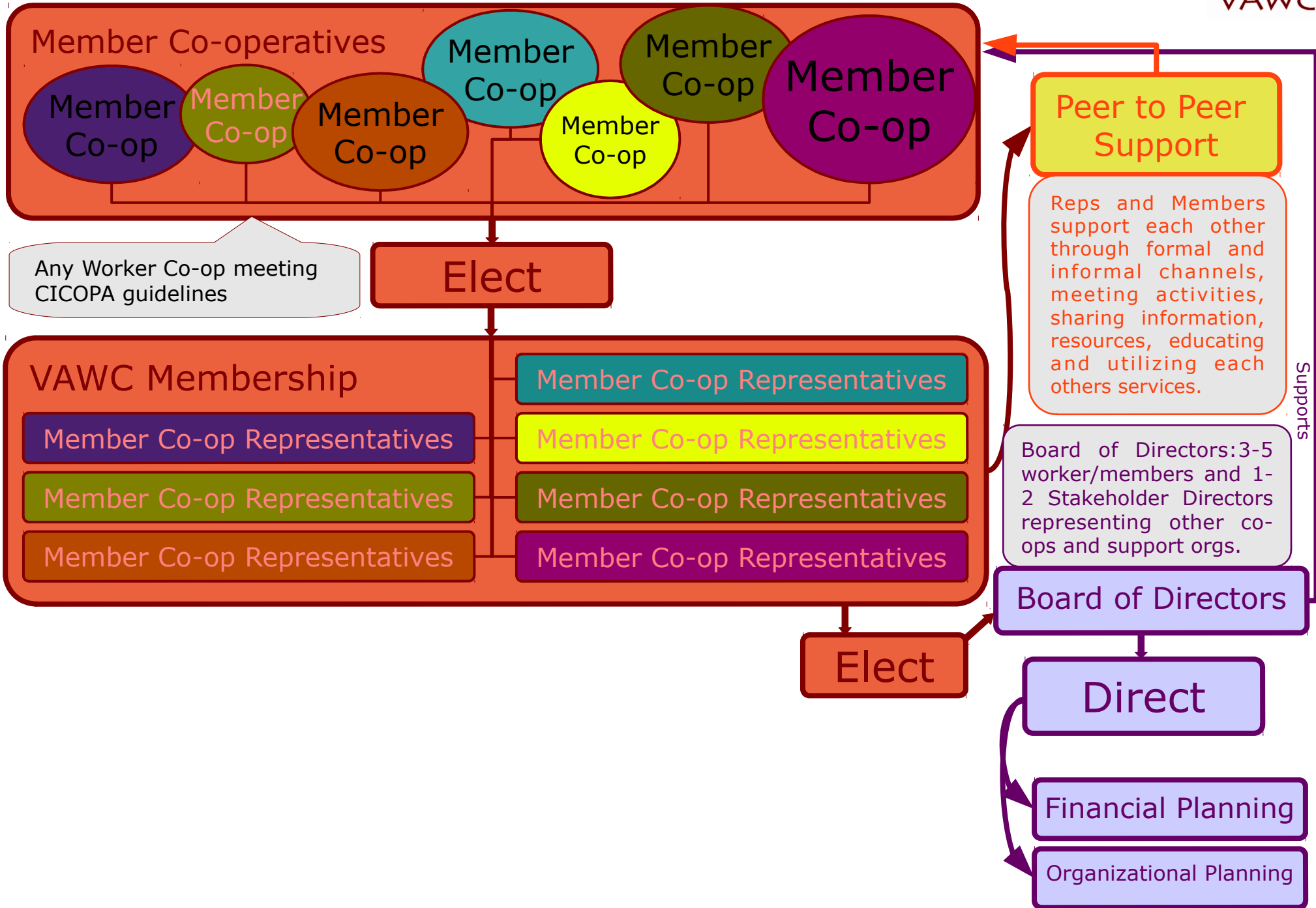
Valley Alliance of Worker Co-operatives



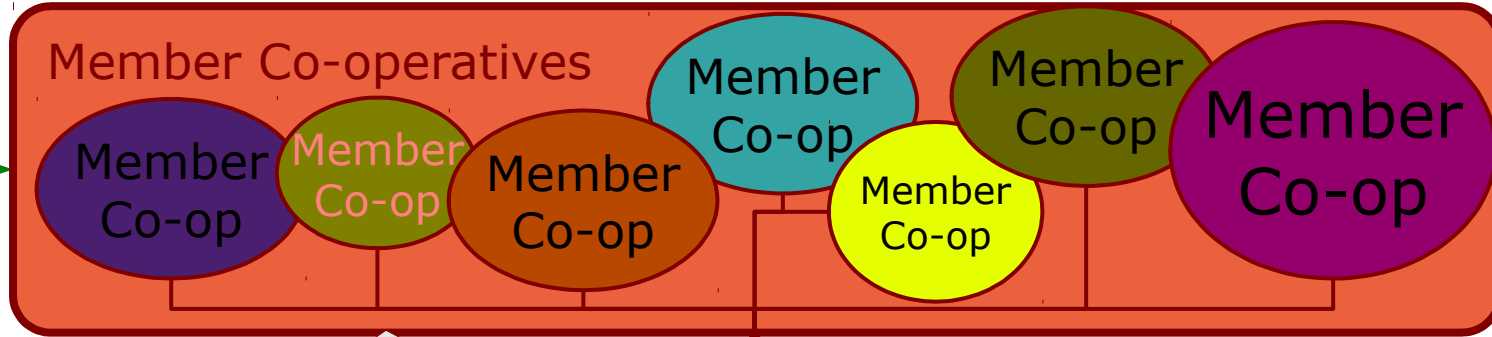
Valley Alliance of Worker Co-operatives



Valley Alliance of Worker Co-operatives

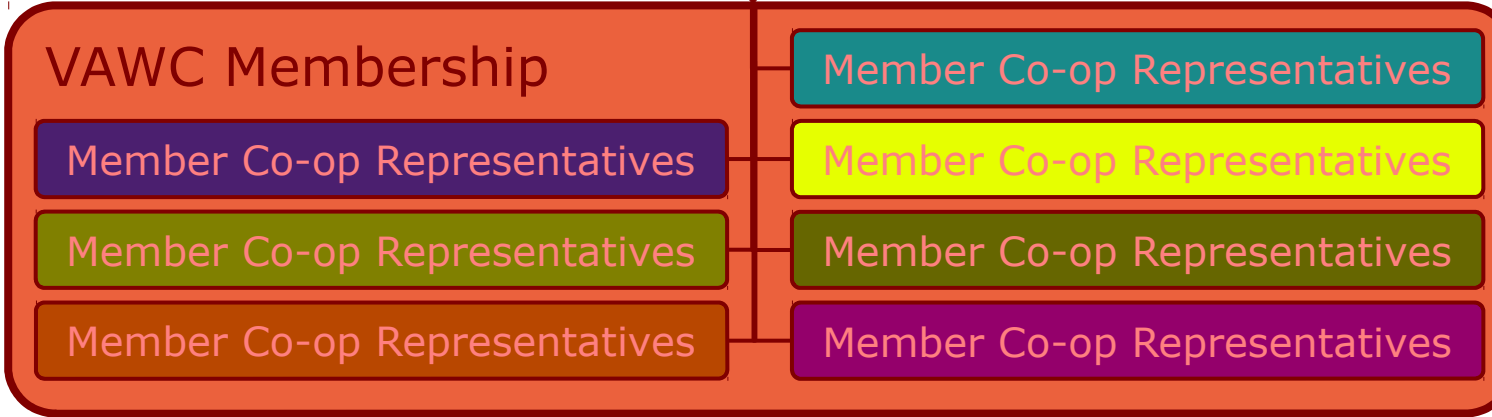


Valley Alliance of Worker Co-operatives



Any Worker Co-op meeting CICOPA guidelines

Elect



Direct

Hire & Fund

Staff

Staff is responsible for activities and to carry out goals: education, support, media, development, marketing, etc. Responsible to Membership, BOD. core funding from Member Co-op Dues.

Elect

Board of Directors

Direct

Financial Planning

Organizational Planning

Peer to Peer Support

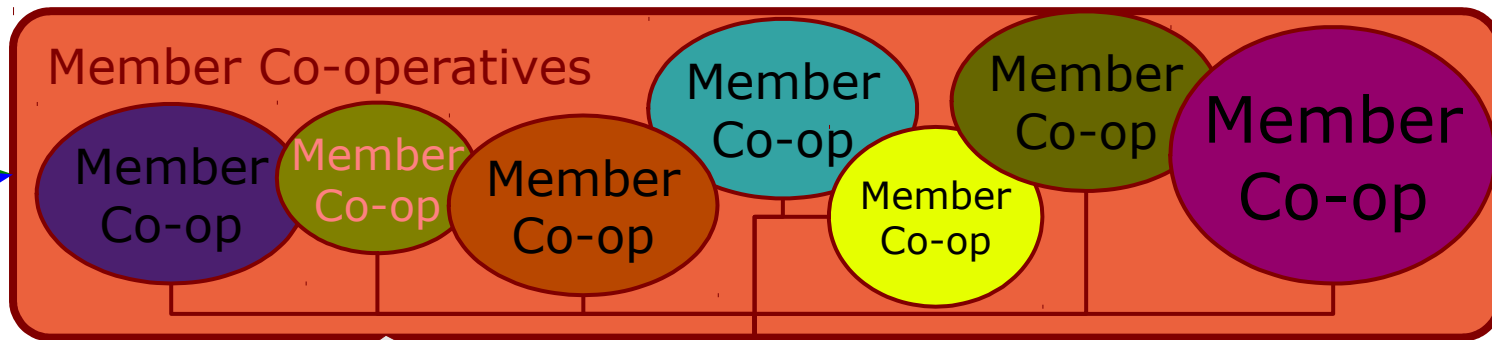
Reps and Members support each other through formal and informal channels, meeting activities, sharing information, resources, educating and utilizing each others services.

Board of Directors: 3-5 worker/members and 1-2 Stakeholder Directors representing other co-ops and support orgs.

Supports

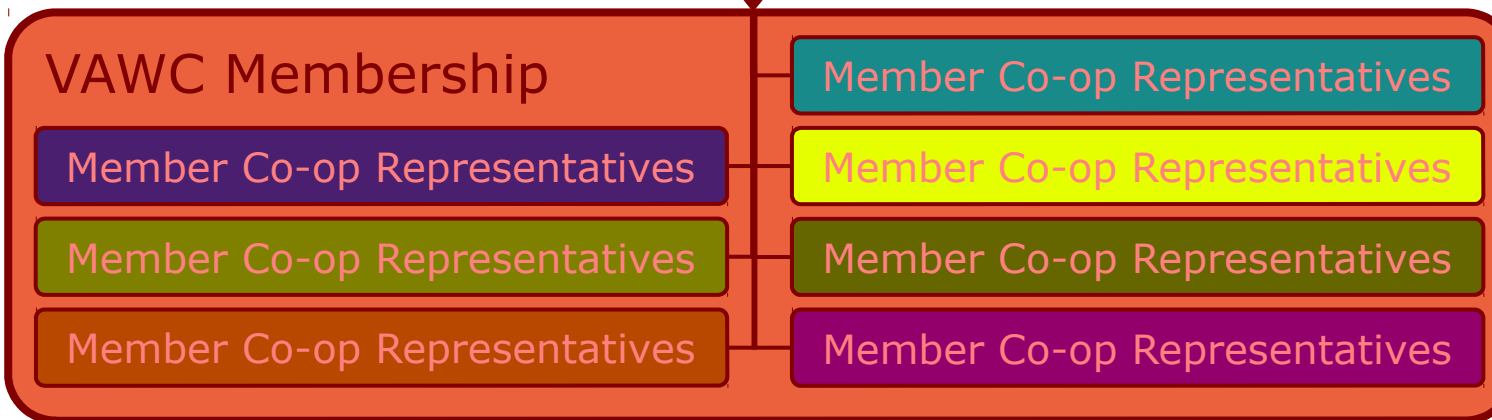
Supports

Valley Alliance of Worker Co-operatives



Any Worker Co-op meeting
CICOPA guidelines

Elect



Peer to Peer Support

Reps and Members support each other through formal and informal channels, meeting activities, sharing information, resources, educating and utilizing each others services.

Board of Directors: 3-5 worker/members and 1-2 Stakeholder Directors representing other co-ops and support orgs.

Board of Directors

Direct

Financial Planning

Organizational Planning

Direct

Hire & Fund

Staff

Staff is responsible for activities and to carry out goals: education, support, media, development, marketing, etc. Responsible to Membership, BOD. core funding from Member Co-op Dues.

VAWC Fund

VAWC Member Co-ops contribute 5% of their surplus to the VAWC Intercooperative Development Fund, owned and managed by VAWC.

Supports

Supports

Supports